



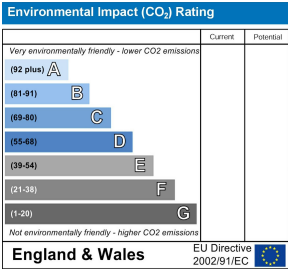
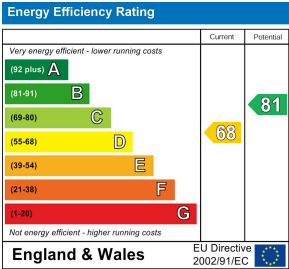
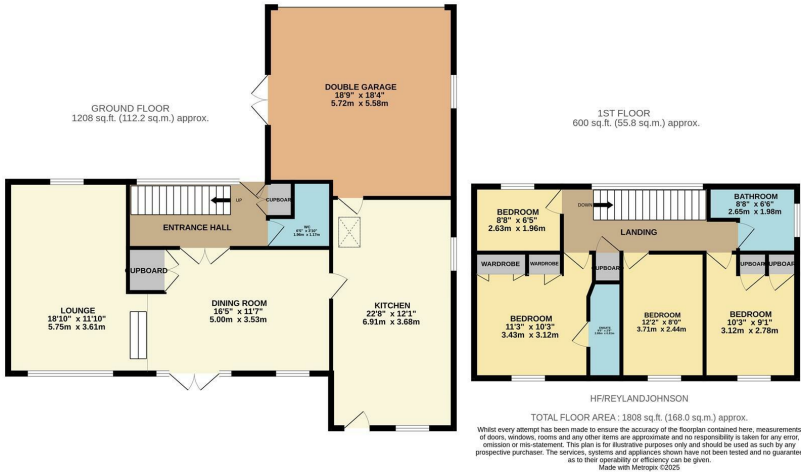
Hilly Field, Harlow, CM18 7HU
Guide Price £700,000



Hilly Field, Harlow, CM18 7HU

(Guide Price £700,000 - £725,000)

Offered for sale with no onward chain is this rarely available four bedroom detached family home located in the premium turning of Hilly Field. The accommodation is set over two floors with the ground floor comprising an entrance hall with cloakroom/WC leading to a lounge, dining room, kitchen with a range of fitted wall & base level units with work-surface areas and a double garage. The first floor offers a master bedroom with en-suite shower room, three further bedrooms and a family bathroom with a three piece-suite. Outside the southerly facing rear garden is mostly laid to lawn with a patio area and side access. Hilly Field is located to the south side of Harlow just off of Ridings Lane offering easy access to the M11 motorway via the A414. Chain Free.



These particulars, whilst believed to be accurate are set out as a general outline only for guidance and do not constitute any part of an offer or contract. Intending purchasers should not rely on them as statements of representation of fact, but must satisfy themselves by inspection or otherwise as to their accuracy. No person in this firms employment has the authority to make or give any representation or warranty in respect of the property.